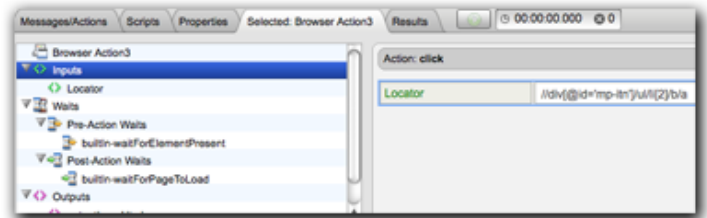


Editing an Existing Browser Action Test

To edit a browser action, double click on the browser action in the Clip Editor to open the Browser Action Editor.



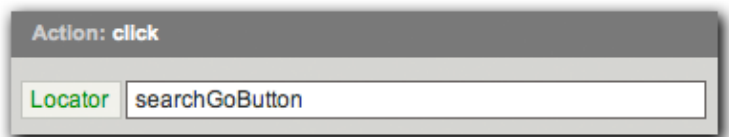
The Browser Action Editor will appear in the lower panel properties pane.



The Browser Action Editor can be made larger by clicking on the button in the lower right-hand corner of the toolbar.



The parameters of the selected browser action can be edited in the middle of the pane of the Browser Action Editor.



Waits, Outputs, Validations and Property Sets, and Custom Properties can all be added in the Browser Action Editor by clicking on the item in the outline and then clicking "Add".

