

Property Sets

Property Sets give you the ability to take text or data from the Web page you are testing and store it in a custom property for use in a subsequent browser action or message. Using Property Sets, you can store the value of an input, the text inside of a table cell, or even complex values such as the result of a JavaScript expression for later use.

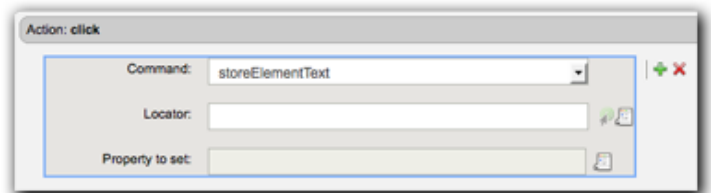
Browser action property sets consist of the selected command, the parameters of the selected command, and the property to store the value in.

Command and parameters

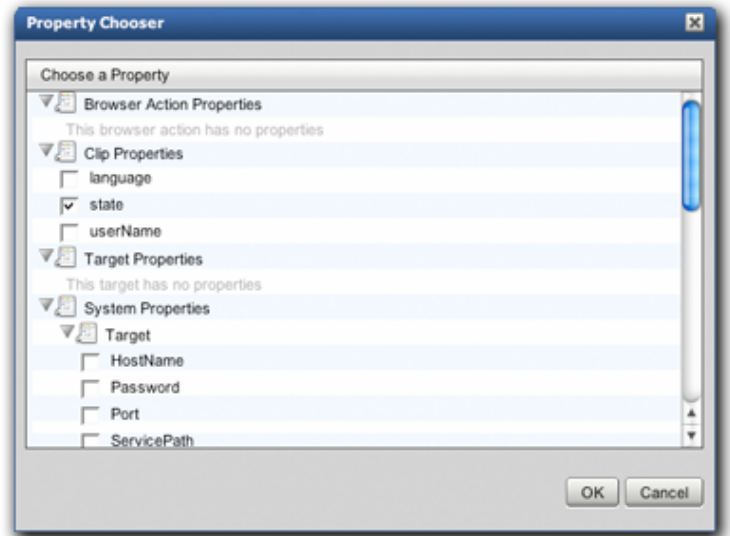
In this example, "Locator" is the only parameter of the selected command, "storeElementText". As you choose different options in the command drop-down, different parameters appear underneath it.

To fill in the Locator parameter, enter the ID of an element directly, or use the Locator tool to identify an element on the page.

To choose the Property whose value you want to set, click on the "Property Chooser" button to the right of Property to set.



The "Property Chooser" dialog will appear. Choose a property from any of the objects listed in the "Property Chooser", which include the current browser action, the test clip, the target and any global properties. If the property that you wish to set is not in the property chooser, you can enter the full property path manually at the bottom of the dialog.



Check the checkbox for the property and click the OK button. Bracketed text will appear in the Property to set input field to indicate that a property has been selected.

When the composition runs, the text value of the element represented by the locator will be stored in the selected property.

